

Empower your IT

## baramundi Argus Cockpit

## Monitor system status with cloud technology from anywhere at anytime

Administrators must keep an eye on the status of one or more IT environments around the clock - a titanic task. The Titan Argus can help them here: This tireless guard from Greek mythology, equipped with hundreds of eyes, is the inspiration for the baramundi Argus Cockpit.

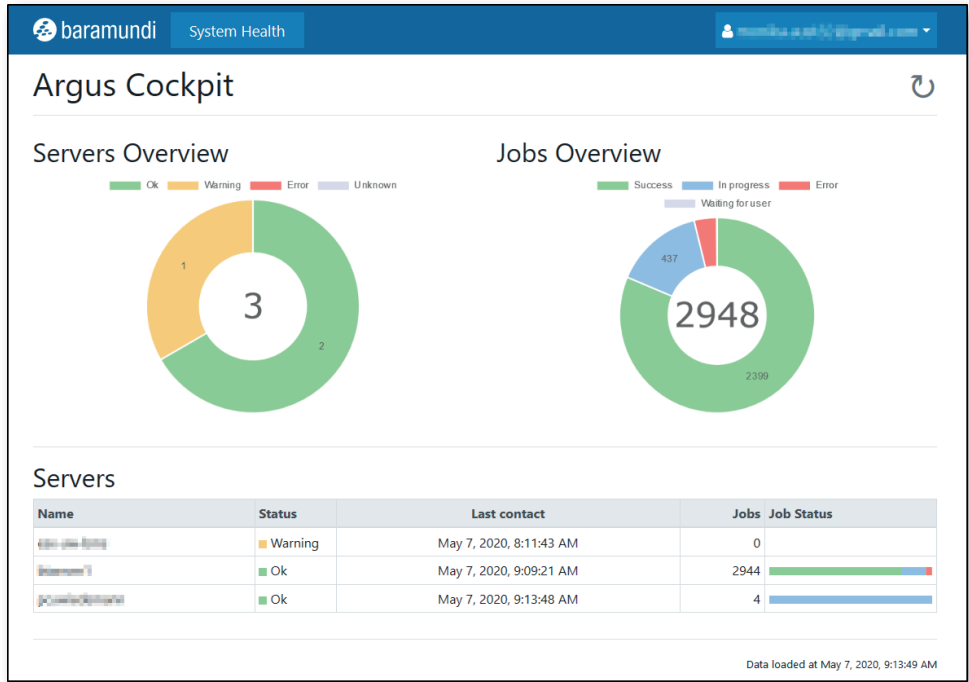
### Your benefits

- System status is available anywhere and anytime in the browser
- No VPN or additional infrastructure necessary
- Quick overview of current jobs
- Instant system health check of individual server



## Location independent with Argus Cockpit

baramundi's Argus Cockpit provides a cloud-based dashboard for the baramundi Management Suite. Argus Cockpit allows IT administrators to control the performance of their bMS environment(s) from any web-enabled device with a clear visual user interface. This solution is multi-tenant capable, so a company's location or locations as well as a customer system or systems can be monitored with the eyes of Argus.



Cumulative view across multiple environments

Administrators responsible for more than one baramundi Management Server in their IT infrastructure often face a dilemma: How can you monitor baramundi jobs and independent server states outside of my network?

„On a 75 inch monitor in my office, the module shows me the most important bMS status information of the servers at all our locations. This gives me a constant overview if there are any escalations. The advantage is to quickly identify problems and to intervene before an employee on site notices the problem.“

Torben Boockmann, Organization Manager  
Möbel Rieger



Maintaining several VPN connections to the respective servers is both confusing and challenging to implement. In addition, they can only be accessed from specifically equipped work areas. This is overly complicated for a quick system status check

## Multi-tenant capability

baramundi Argus Cockpit provides simultaneous monitoring of several IT environments managed with the baramundi Management Suite. Administrators with multiple company locations as well as Managed Service Providers (MSP) who are responsible for various customer environments can monitor the status of all their systems directly over a single user interface. Argus Cockpit provides information on whether there is an action required for one of the connected systems, and shows details about a potential system interruption.

## Cloud technology



Information on the performance of connected systems is received from an MS Azure environment overseen by baramundi. This eliminates the need to establish a direct VPN connection to managed networks. Needed data can be retrieved directly in a dashboard view using the browser of any modern, web-enabled device. With this responsive view, IT administrators have access to relevant IT environment data and its key figures anytime and anywhere.

## Job assignments

Q Enter search term		Status: <input type="checkbox"/> Success <input checked="" type="checkbox"/> In progress <input checked="" type="checkbox"/> Error <input checked="" type="checkbox"/> Waiting for user	
Device	Status	Last action	Status message
WIN10E13D	In progress	Mar 13, 2020, 8:33:56 AM	Erfolgreich beendet am 13.03.2020 08:33:56 und neu geplant
WIN10E103D	In progress	Mar 13, 2020, 6:07:31 AM	Erneuter Ausführungsversuch am 03/13/20 um 06:07 ausstehend: Konnte <a href="#">Read more</a>
WIN10E24D	Error	Mar 13, 2020, 12:00:12 AM	Am 12.03.2020 01:18:09 mit Fehler beendet: Ausführungstimeout. Der Job wurde nicht in der vorgesehenen Zeit abgeschlossen; Der Job wurde trotzdem neu geplant. <a href="#">Show less</a>

Anytime - anywhere: Access to detailed job error messages

## Try it now!

Request a 30-day fully functional trial version:








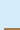

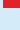
[www.baramundi.com](http://www.baramundi.com)

Contact us to learn more:



Fon: +1 508.861.7561 | [requestUSA@baramundi.com](mailto:requestUSA@baramundi.com)

# The Full Potential of the baramundi Management Suite (Module Overview)

- |   |   |   |
|---|---|---|
|  Inventory Hardware and Software              |  Manage Mobile Devices |  Backup and Restore Systems, Data and Settings |
|  Install Operating Systems Quickly and Easily |  Smart IT Management   |  Integration with Other Solutions              |
|  Distribute Software Easily                   |  Guarantee Security    |   |



## **baramundi Inventory**

Comprehensive Overview of All Hardware, Software and Data



## **baramundi Network Devices**

Detects SNMP Printers, Routers, Switches and Other Devices, and Visualizes Network Topology



## **baramundi AUT**

Finds Unused Software and Helps Reduce Licensing Costs



## **baramundi OS-Install**

Install Operating Systems Quickly and Natively



## **baramundi OS-Cloning**

Capture and Automatic Deployment of OS Images



## **baramundi Deploy**

Smart Installation and Deployment of Software with Flexible Installation Methods



## **baramundi Automate**

Quick and Secure Workflow Automation



## **baramundi Mobile Devices**

Automated Enterprise Mobility Management (EMM)



## **baramundi Mobile Devices Premium**

Secure separation of private and business data on mobile devices and configuration of dedicated devices



## **baramundi License Management**

Creates a Quick Overview of Your License Posture, Helping to Avoid Over- and Under-licensing



## **baramundi Vulnerability Scanner**

Automated Vulnerability Scanning of PCs and Servers and Fulfillment of Security and Compliance Policies



## **baramundi Patch Management**

Reliable, Rule-Based Patch Deployment with Automatic or Customizable Controls



## **baramundi Managed Software**

Provides Updates and Security Patches for the Entire Catalog of 3rd Party Applications as Tested, Deployment-Ready Packages



## **baramundi Defense Control**

Overview and Control for Native Security Settings such as BitLocker



## **baramundi Smart DeviceProtect** powered by Drivelock

Flexible and Secure Control of All Externally Connected Media



## **baramundi Smart AppProtect** powered by Drivelock

Govern All Executables Within the Company



## **baramundi Smart FileProtect** powered by Drivelock

User-Based or Group-Based Encryption at the File Level



## **baramundi Smart DiskProtect** powered by Drivelock

Quick and Reliable Encryption of the Entire Hard Disk or Partition



## **baramundi Disaster Recovery**

Accurate Drive Backup and Restoration



## **baramundi Personal Backup**

Efficient Backup and Restore of User Data and Settings



## **baramundi Connect**

SOAP and REST based Interfaces To Helpdesk, License and Asset Management, and Other IT Systems



## **baramundi Argus Cockpit**

Cloud based System Health Check to Monitor System Health Anywhere at Any Time



## **baramundi Remote Control**

Connects Directly to User Desktops or Servers for Fast Remote Support



## **baramundi Energy Management**

Monitors Endpoint Power Consumption to Help Reduce Energy Costs