



Hardware-Management

The Integration of Fujitsu DeskView

INHALT

1	Comprehensive Management of Fujitsu End Devices	2
2	Integration of DeskView Functions into baramundi Management Suite	3
2.1	Firmware Inventory	3
2.2	Firmware Configuration	4
2.3	Prerequisites	4
3	Application Scenarios.....	5
3.1	Operating System Migrations	5
3.2	Securely Configure Systems	6
3.3	Rolling Out and Maintaining Hardware	6

© 2018 baramundi software AG

Statements regarding equipment and technical functionalities are not binding and are for information only.
Subject to technical changes.

Management Board: Dipl.-Ing. (FH) Uwe Beikirch | Dr. Lars Lippert

Chairman of the Supervisory Board: Dr. Dirk Haft

Registered office and court: Augsburg, HRB no.: 2064 | Tax ID no. DE 210294111

1 Comprehensive Management of Fujitsu Devices

IT administration is not only limited to managing operating systems and applications. For many tasks, access to firmware settings is also required. Fujitsu offers the DeskView Client for this purpose, which enables central management of devices at the system and firmware level.

This combination with client management software features provides many significant benefits for an IT administrator. A multitude of application cases, such as operating system migrations or security management, can thus be more easily implemented. At the same time, the overview of the status of the devices is improved in an integrated management solution. The baramundi Management Suite is integrating DeskView Client features and creating a comprehensive solution for administrating Fujitsu devices automatically.

2 Integration of DeskView Functions into the baramundi Management Suite

In collaboration with Fujitsu, baramundi software AG is offering an integrated solution for the management of hardware-related device features with the baramundi Management Suite. To do this, tools from the Fujitsu DeskView manageability family are used that can be controlled using the client management solution.

These DeskView tools are integrated seamlessly into the interface, user logic, and structure of the baramundi Management Suite. Tasks are allocated and executed with the same mechanisms as for individual devices, like classic client management jobs for managing software and operating systems. No separate menu items have to be opened to use the DeskView features and there is no need to license an additional module.

2.1 Firmware Inventory

As part of an inventory, the baramundi Management Center shows firmware settings specific to Fujitsu seamlessly integrated next to all other software and hardware inventory data from baramundi Inventory.

The inventory automatically runs in the background on the device, unnoticed by the user. You can define flexibly how often it runs and which information should be collected. You can use the API to provide gathered inventory data as required to other applications, such as a helpdesk system, or an export to Excel.

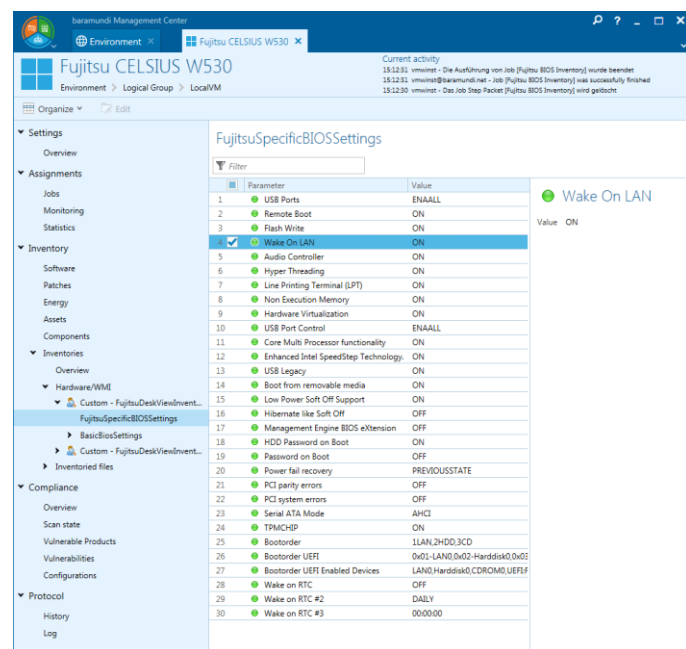


Figure 1 – Inventory of firmware settings

In the figure, for example, you can see the Wake-on-LAN function is active in the selected workstation of type FUJITSU CELSIUS W530.

2.2 Firmware Configuration

Firmware values can be selectively changed on Fujitsu devices using the baramundi Management Suite. To do this, baramundi Management Suite's job control is available for targeted control of larger environments with direct feedback. This allows an automated, time or event-controlled execution of tasks on one or more devices. Tasks that have been defined and prepared once can be used again and again. The IT administrator receives feedback on the status and recognizes whether a task has been successfully executed or whether an error has occurred.

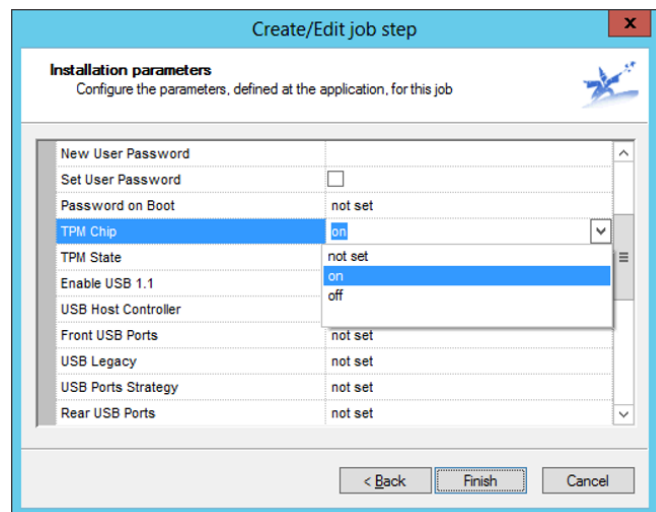


Figure 2 – Firmware configuration

As part of a BitLocker introduction, for example, you can ensure that the TPM chip is enabled on the computers concerned. The boot order, USB settings, and lots more can also be configured.

2.3 Prerequisites

Fujitsu devices can be managed using Fujitsu DeskView. The Fujitsu Feature Finder can help determine which systems are supported by DeskView Client and with which scope of features: <http://www.fujitsu.com/fts/solutions/business-technology/manageability/feature-finder.html>

3 Application Scenarios

The possibilities of DeskView supplement and enhance baramundi Management Suite application scenarios. Established tasks such as operating system migration, security management, and hardware rollouts in the context of existing baramundi modules are simplified by the new hardware management features. These hardware management functions include taking an inventory of and configuring firmware settings, and updating BIOS/UEFI firmware.

OS Migration	Higher Security	HW Rollout
<ul style="list-style-type: none"> • Update BIOS/UEFI firmware • Modify BIOS/UEFI firmware settings • baramundi OS-Install • baramundi OS-Cloning • baramundi Deploy 	<ul style="list-style-type: none"> • baramundi Compliance Management • baramundi Patch Management • baramundi Managed Software • Modify and check firmware settings <ul style="list-style-type: none"> • TPM (for Bitlocker) • Boot sequence • Boot devices • Security features 	<ul style="list-style-type: none"> • baramundi OS-Install • baramundi Patch Management • baramundi Managed Software • Update BIOS/UEFI firmware

Figure 3 – Application cases; new possibilities thanks to DeskView integration shown in white

3.1 Operating System Migrations

It's usually not easy for companies to change the operating system of the PCs they use. Processes and applications have been adapted and workarounds have been implemented. But at some point every Windows version reaches the end of its product life cycle and Microsoft stops supplying patches.

To be able to reliably migrate existing systems to a new operating system, the system firmware often has to be updated and reconfigured. An example of this is the configuration of the disk controller, which should be switched from the traditional "IDE compatible mode" to the modern "AHCI mode" when upgrading from an older version of Windows to the current version. This can now be executed automatically using baramundi Management Suite.

A simple and efficient upgrade is guaranteed in combination with the baramundi Management Suite features for software management, which can be used for an automated migration (for example the central installation of the operating system and applications).

3.2 Securely Configure Systems

baramundi Management Suite is used to configure Windows devices for secure operation and maintain the current patch status. The solution scans clients for vulnerabilities and deploys updates and patches automatically for both Microsoft products and non-Microsoft applications. The configuration of the devices can be checked against a prepared rule set based on company requirements, for example with regard to secure passwords.

In addition, Fujitsu devices provide security features at the system and hardware level whose configuration can be automatically implemented and monitored with the baramundi DeskView integration. Examples include pre-configuring the system TPM module for the use of BitLocker full disk encryption, checking for insecure and undesired boot devices, and controlling the system using external USB interfaces. This allows security rules to be implemented across all the devices.

3.3 Rolling Out and Maintaining Hardware

baramundi Management Suite is used to automatically set up new systems during a hardware upgrade. The solution assists the IT administrator in keeping operating systems and applications up-to-date, guaranteeing security, and providing users with the required features.

It is now also possible to use the DeskView integration to update the system firmware and its settings on Fujitsu devices so that it remains up-to-date throughout the entire life cycle.

About baramundi software AG

baramundi software AG provides companies and organizations with efficient, secure, and cross-platform management of **workstation** environments. Around the world, customers of all sizes and from every sector benefit from the **independent** German manufacturer's many years of experience and outstanding products. These are compiled into an integrated, future-orientated approach in baramundi Management Suite: unified endpoint management, enterprise mobility management, and endpoint security are provided via a shared interface, using a single database, and according to global standards.

Request a Free Trial Version

Test baramundi Management Suite yourself and request a free 30-day trial version.

www.baramundi.com/test-whitepaper

Register Now for the Live Webcast

Discover in a free webcast how to automatically manage and back up your PC clients, servers, and mobile devices with baramundi Management Suite.

www.baramundi.com/webinar-white-paper

We are looking forward to meeting you!


Get in touch!


**baramundi software AG**

Beim Glaspalast 1
86153 Augsburg, Germany

 +49 821 5 67 08 - 380
request@baramundi.de
www.baramundi.de


 +44 2071 93 28 77
request@baramundi.co.uk
www.baramundi.co.uk

 +48 735 91 44 54
request@baramundi.pl
www.baramundi.pl

 +49 821 5 67 08 - 390
request@baramundi.com
www.baramundi.com

baramundi software USA, Inc.

550 Cochituate Road, Suite 25
Framingham, MA 01701, USA

 +1 508 861 75 61
requestUSA@baramundi.com
www.baramundi.com

baramundi software Austria GmbH

Landstraßer Hauptstraße 71/2
1030 Wien, Austria

 +43 1 7 17 28 - 545
request@baramundi.at
www.baramundi.at